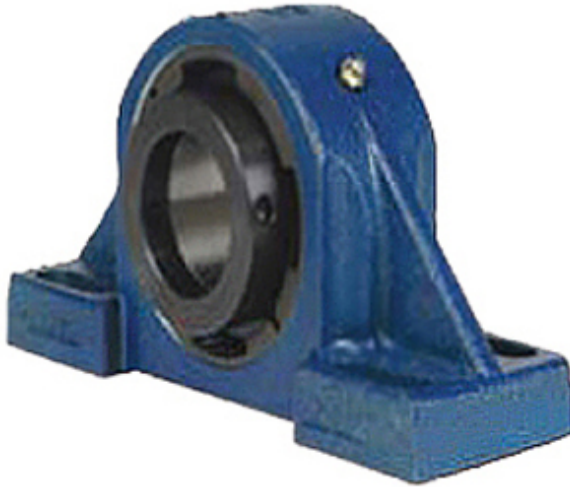




TIMKEN BEARINGS TRAINING INDUSTRY



5.5 Inch | 139.7 Millimeter x 7.56 Inch | 192.024 Millimeter x 6.693 Inch | 170.002 Millimeter QM INDUSTRIES QMPG30J508SB Pillow Block Bearings

Bearing No. QMPG30J508SB

QMPG30J508SB Bearing 2D drawings and 3D CAD models

Category	Pillow Block Bearings
Inventory	0.0
Manufacturer Name	TIMKEN
Minimum Buy Quantity	N/A
Weight	106.69
EAN	0883450140096
Product Group	M06288
Number of Mounting Holes	4
Mounting Method	Eccentric Collar
Housing Style	4 Bolt Pillow Block
Rolling Element	Spherical Roller Bearing
Housing Material	Cast Steel
Expansion / Non-expansion	Non-expansion
Mounting Bolts	1 Inch
Relubricatable	Yes
Insert Part Number	23230
Seals	Double Lip Nitrile Rubber
Housing Configuration	1 Piece Solid
Inch - Metric	Inch
Other Features	Double Row SN Style
Long Description	4 Bolt Pillow Block; 5-1/2" Bore; 6.693" Base to Center Height; Eccentric Collar Mount; Spherical Roller Bearing; 17-1/4" Minimum



TIMKEN BEARINGS TRAINING INDUSTRY

	Bolt Spacing; 19" Bolt Spacing Maximum; Relubricat
Category	Pillow Block
UNSPSC	31171511
Harmonized Tariff Code	8483.20.40.80
Noun	Bearing
Keyword String	Pillow Block
Manufacturer URL	http://www.qmbearings.com
Weight / LBS	250
Bolt Spacing Maximum	19 Inch 482.6Millimeter
Nominal Bolt Center to Center	18.1 Inch 459.7 Millimeter
B	6.693 Inch 170.002 Millimeter
Actual Bolt Center to Center	0 Inch 0Millimeter
Bolt Spacing Minimum	17.25 Inch 438.15Millimeter
d	5.5 Inch 139.7 Millimeter
D	7.56 Inch 192.024 Millimeter