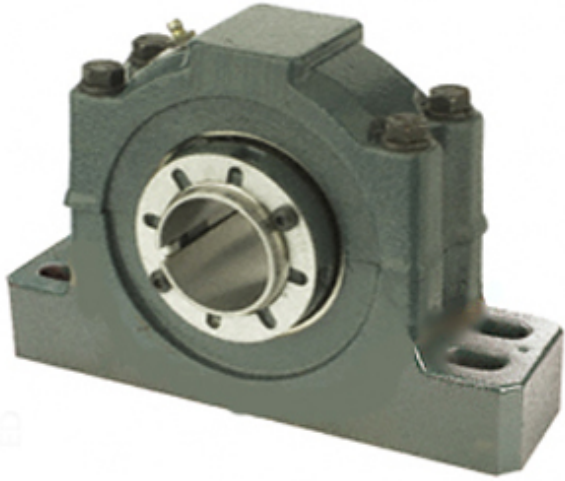




# TIMKEN BEARINGS TRAINING INDUSTRY



P4B534-ISAF-515R Bearing 2D drawings and 3D CAD models

5.938 Inch | 150.825 Millimeter x 7.078 Inch |  
 179.781 Millimeter x 7.063 Inch | 179.4 Millimeter  
**DODGE P4B534-ISAF-515R Pillow Block  
 Bearings**

Bearing No. P4B534-ISAF-515R

Category	Pillow Block Bearings
Inventory	0.0
Manufacturer Name	ABB MOTORS AND MECHANICAL INC
Minimum Buy Quantity	N/A
Weight	113.954
EAN	0782475222919
Product Group	M06288
Number of Mounting Holes	4
Mounting Method	Adapter Sleeve
Housing Style	4 Bolt Pillow Block
Rolling Element	Spherical Roller Bearing
Housing Material	Cast Iron
Expansion / Non-expansion	Non-expansion
Mounting Bolts	1 Inch
Relubricatable	Yes
Insert Part Number	INS-IP-515R
Seals	Triple Lip Contact
Housing Configuration	2 Piece Split
Inch - Metric	Inch
Other Features	Double Row   Has Flinger
Long Description	4 Bolt Pillow Block; 5-15/16" Bore; 7-1/16" Base to Center Height; Adapter Sleeve Mount; Spherical



## TIMKEN BEARINGS TRAINING INDUSTRY

	Roller Bearing; 19-3/8" Minimum Bolt Spacing; 21-5/8" Bolt Spacing Maximum; Relub
Category	Pillow Block
UNSPSC	31171511
Harmonized Tariff Code	8483.20.40.80
Noun	Bearing
Keyword String	Pillow Block
Manufacturer URL	<a href="http://www.dodge-pt.com">http://www.dodge-pt.com</a>
Manufacturer Item Number	P4B534-ISAF-515R
Manufacturer Internal Number	037851
Weight / LBS	251
D	7.078 Inch   179.781 Millimeter
B	7.063 Inch   179.4 Millimeter
d	5.938 Inch   150.825 Millimeter
Nominal Bolt Center to Center	20.5 Inch   520.7 Millimeter
Bolt Spacing Maximum	21.625 Inch   549.275Millimeter
Actual Bolt Center to Center	0 Inch   0Millimeter
Bolt Spacing Minimum	19.375 Inch   492.125Millimeter